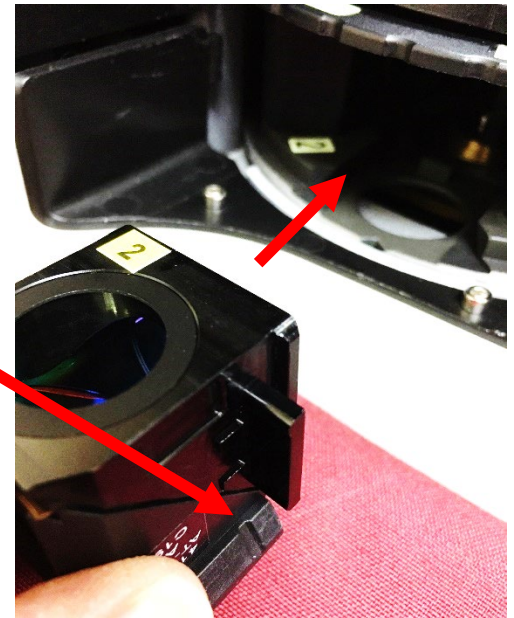


IMPORTANT

To avoid damage to the filter cubes, they must be carefully and properly installed.

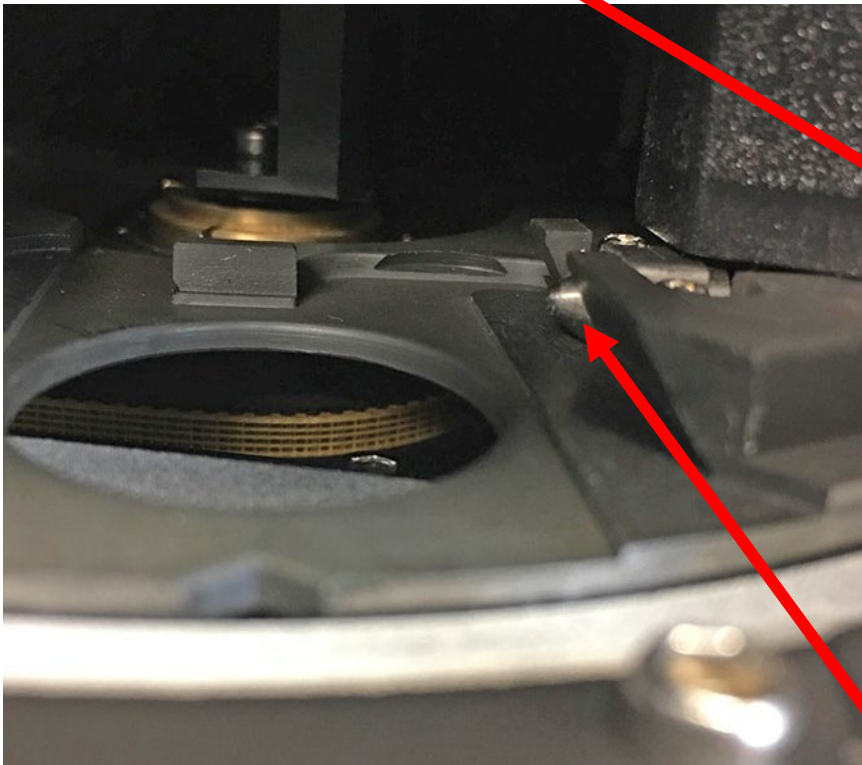
Cubes are numbered according to their position in the turret – match the number on the cube to the position number on the turret.



To install:

NOTES: Each filter cube has a notch on the bottom right side of the cube slider dovetail (see above). Position the filter cube as shown above to insert into the turret.

There is a securing pin on the inside of the turret for each filter position. The filter cube will be installed properly when the notch on the cube clicks into place.





1. To install a filter cube, align the cube notch with the securing pin on the inside right of the turret receptacle and carefully slide the cube in until it clicks into place.



2. Shown here, the filter cube is properly seated and installed.

NOTE

- Never touch any area of the filter cube other than the black casing.
- Be sure to carefully reinstall the turret cover to avoid breakage.