

EXI-410
Routine Inverted Microscope



ACCU-SCOPE®

MICROSCOPY & IMAGING SOLUTIONS



Empowering Discovery. Advancing Results.

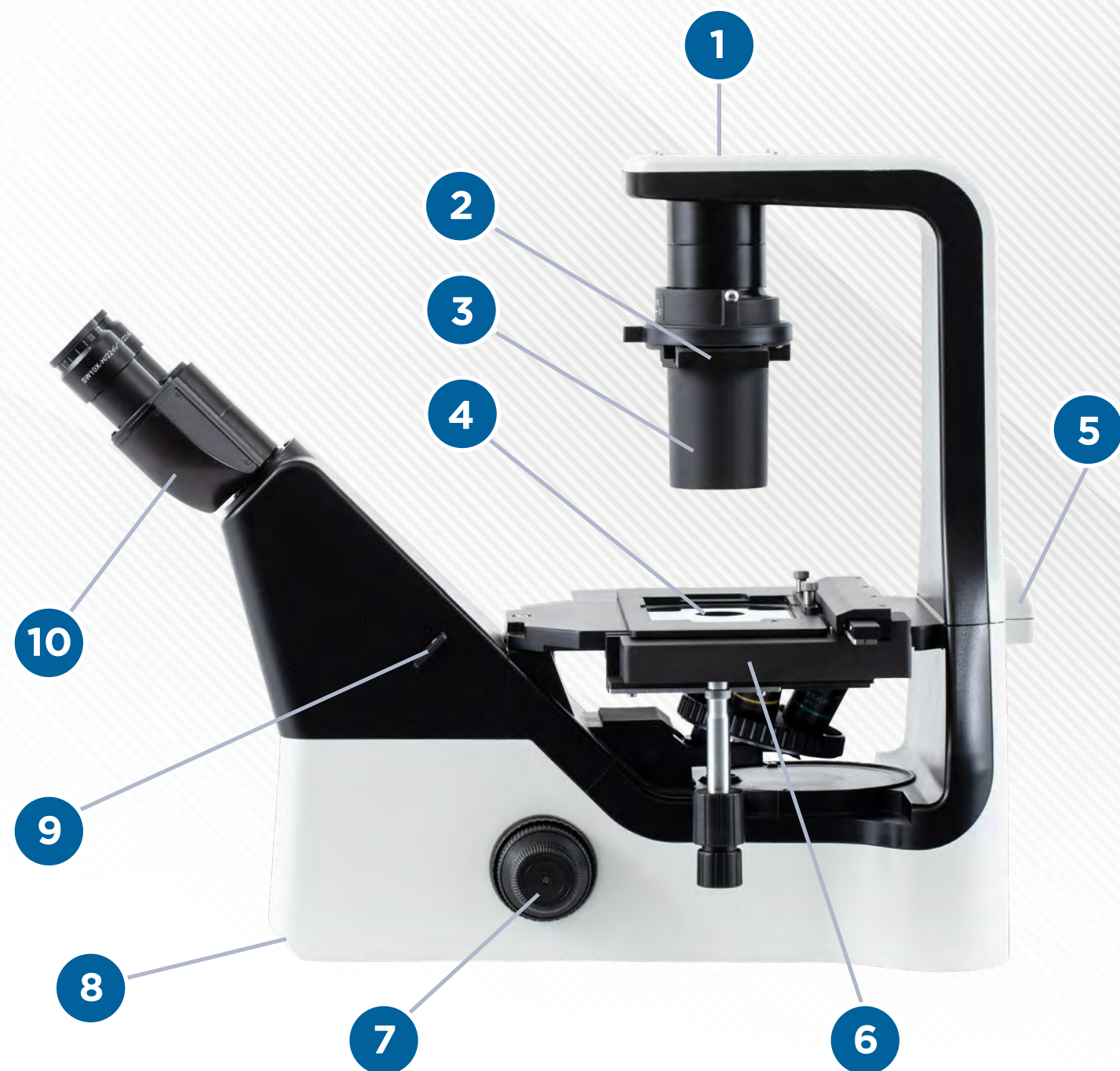
Next Generation Microscopy and Imaging Solutions

Your Flexible Biological and Life Science Microscope Platform

As a market leader in quality microscopy and imaging solutions, ACCU-SCOPE blends precision, performance and outstanding value like no other manufacturer can. We deliver superb yet affordable optical instrumentation and microscopy innovations that help advance the work, improve the outcomes and empower the achievements of the demanding professionals we're privileged to serve. No matter your industry, discipline or individual endeavor, count on ACCU-SCOPE microscopy, imaging solutions and accessories to exceed expectation as you achieve your goals.



Your Dependable Inverted Microscope



- 1. 3W transmitted LED
- 2. Phase contrast or emboss contrast slider
- 3. Extra long working distance condenser
- 4. Clear glass stage plate
- 5. Rear carry handle position
- 6. Optional mechanical stage
(optional auxiliary stage and holders)
- 7. Coaxial coarse and fine focus
- 8. Front carry handle position
- 9. Optional emboss contrast slider
- 10. Binocular eyetubes with 10x/22mm eyepieces



- 11. Fluorescence light shield
(standard with fluorescence units)
- 12. Attachable swing-in contrast shield
(standard with fluorescence units)
- 13. Fluorescence LED modules
(EXI-410-FL only)
- 14. Fluorescence filter cube turret
(EXI-410-FL only)
- 15. Quintuple nosepiece
- 16. Transmitted and fluorescence light intensity
- 17. Camera port
(requires adapter and camera)
- 18. Light path selector

Live Cell Observation

The EXI-410-PH is ready for brightfield and phase contrast observation of live cells without the need for staining. This phase contrast model includes a pre-centered phase contrast slider for the condenser and Plan Phase 10x and 20x objectives. Plan Semi-APO Phase 4x, 10x, 20x and 40x objectives are available options. Add the optional mechanical stage and stage inserts to simplify sample movement and positioning.



Fluorescence Observation

The EXI-410-FL is ready to accept your choices of LED fluorescence modules and fluorescence filter sets (up to 3 each) to meet the needs of your application. Optional phase contrast and emboss contrast accessories are excellent complements to fluorescence. Choose from Plan Phase, Plan Semi-APO Phase, Plan Achromat, Plan Semi-APO and Plan APO objectives to complete your microscope. The standard contrast shield reduces the effect of ambient light on the quality of your fluorescence image.

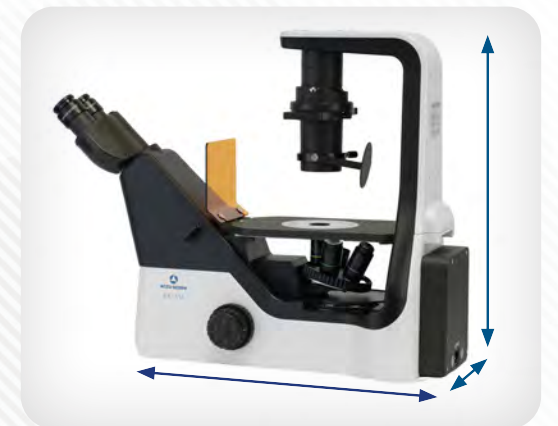




Compact, Comfortable & Efficient

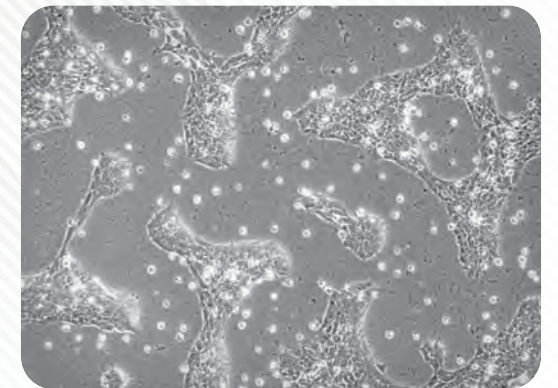
Ultra-Stable & Compact Body

Illumination modules including the epi-fluorescence light source are seamlessly incorporated into the microscope body, creating a small system footprint, high stability, and reduced potential for accidents. Rubber feet provide vibration-dampening properties to improve image quality, especially at higher magnifications.



High-Intensity Transmitted Illumination

The built-in 3-watt S-LED diascope illumination module delivers bright, even and cool illumination across the entire field of view. The LED lamp is designed to deliver brilliant, color-balanced illumination for 50,000 hours or more.



Comfortable, Ergonomic Operation

The illumination, focus and mechanical stage (optional) controls are ergonomically located for maximum comfort and easy access. The control positions are easily memorized for fast and convenient operation, often without the user needed to take their eyes away from the eyepieces.



The viewing head binocular eyetubes can be rotated 180° clockwise or counterclockwise to raise the eyepiece height by an additional 35mm. The adjustable eyepiece height further accommodates multiple users who may differ in height or viewing preference.



Wide Selection of Accessories



System Diagram

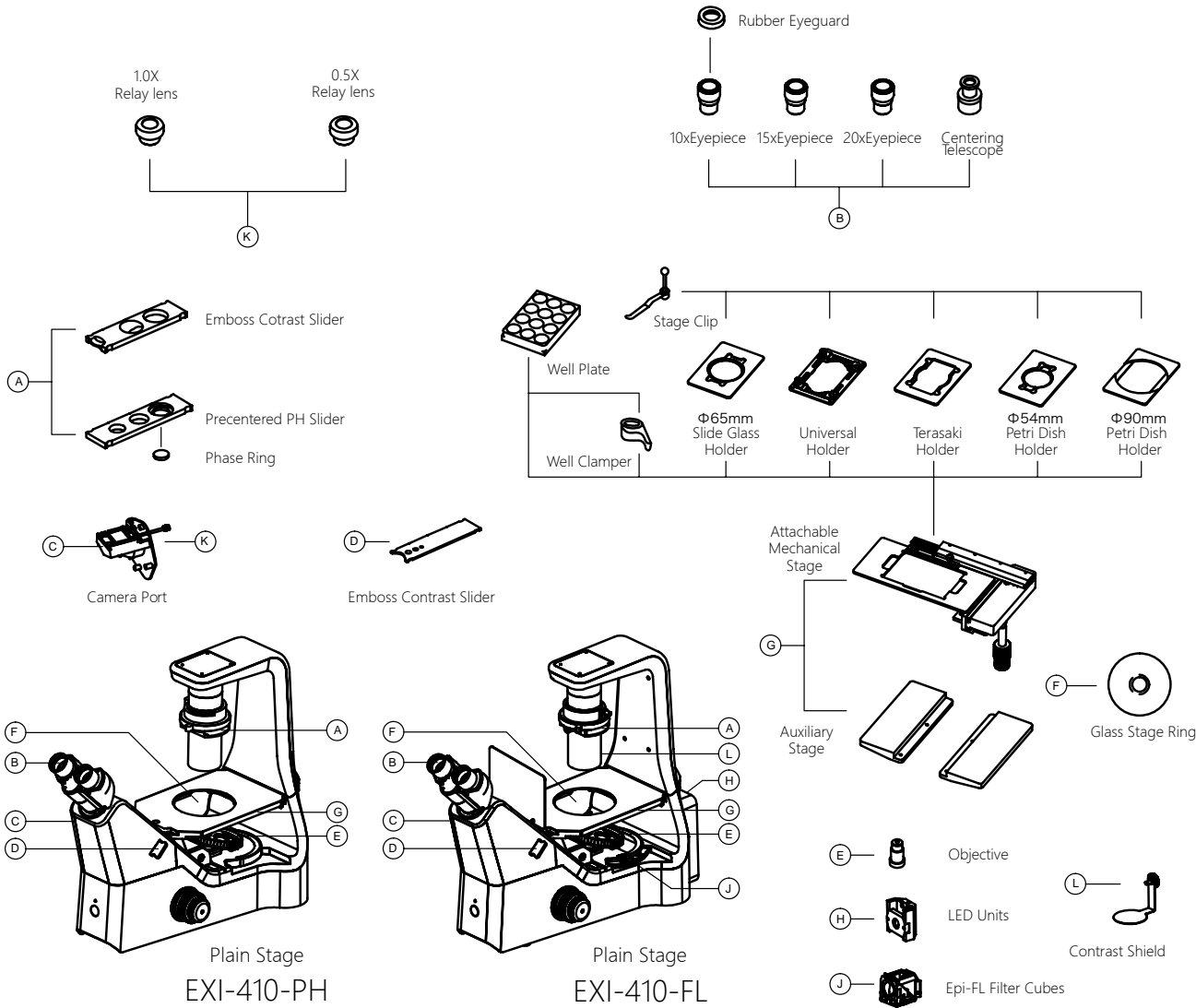
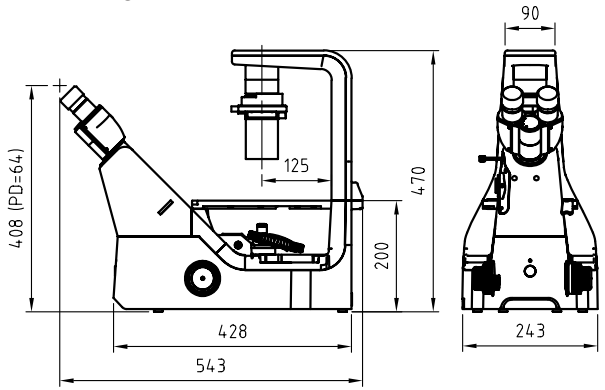
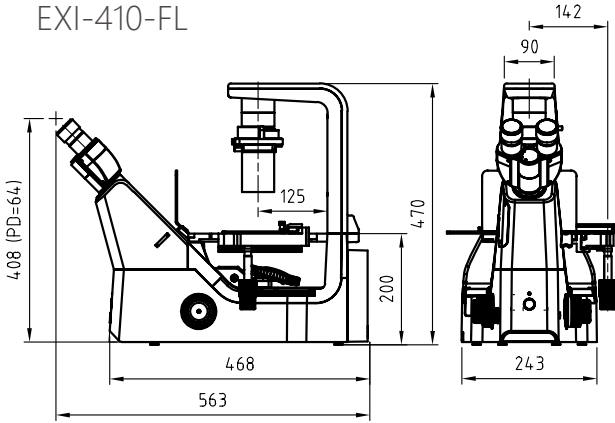


Diagram Dimensions Unit: mm

EXI-410-PH



EXI-410-FL



EXI-410 Routine Inverted Microscope

SPECIFICATIONS	EXI-410-PH	EXI-410-FL
Optical System	Infinity Optical System, f = 200mm	
Viewing Heads	Seidentopf Viewing Head, Inclined at 45°, Interpupillary 48-75mm; binocular head rotates to raise/lower viewing position by 35mm; ø30mm eyetubes; left-side camera port (light split with eyepieces: 100/0 and 0/100) (requires camera adapter)	
Objectives	LWD Plan Achromat 4x; LWD Plan Achromat Phase 10x*, 20x*, 40x; LWD Plan semi-Apochromat Fluor Phase 4x, 10x, 20x, 40x; LWD Plan semi-Apochromat Fluor 4x, 10x, 20x, 40x; Plan Apochromatic 10x, 20x, 40x, 60x oil, 100x oil * Included with EXI-410-PH	
Eyepieces	WF10x/22mm focusing eyepiece (included); Optional: WF15x/16mm, WF20x/12.5mm	
Nosepiece	Quintuple	
Focusing System	Coaxial coarse and fine focus; fine-focus precision 0.002mm; focus range: 7mm up, 1.5mm down; total travel limit 18.5mm	
Stand	Cast aluminum alloy	
Stages	Fixed plain stage 170mm(X) x 250mm(Y); 300mm wide with auxiliary stages installed; Optional mechanical stage movement range 129mm(X) x 83mm(Y)	
Sample Holders	Optional sample holders for optional mechanical stage: Universal holder for Terasaki plate holder, glass slide, ø35-65 dish and hemocytometer; Terasaki holder / ø65mm Petri dish holder; ø35mm Petri dish holder; ø54mm Petri dish holder, hemocytometer, glass slide holder; ø90mm Petri dish holder; Well clamber	
Condenser	Extra-long working distance condenser, N.A. 0.3, WD 75mm	
Phase Contrast Slider	Precentered Universal Phase Contrast Slider 10x/20x/40x, filter slot, included; click stop positions in condenser slot; Optional 4x/10x/20x/40x Phase Contrast Slider	Optional
Transmitted Illumination	3W S-LED transmitted illumination with variable intensity control; 50,000-hour lifetime	
Fluorescence	N/A	3W LED epi-fluorescence illuminators: DAPI 365nm, 395nm or 405nm; GFP/FITC 470nm; TRITC 525nm; TRITC/DsRed 540nm; Texas Red 560nm or 590nm; Cy5 640nm; 3-position filter cube turret
Observation Methods	Brightfield, Phase contrast, Emboss contrast (optional)	Brightfield, Epi-fluorescence, Phase contrast (optional), Emboss contrast (optional)
Power Consumption	3W	3W
Weight (approx.)	30lbs. (standard configuration with fixed binocular viewing head)	34lbs.



Copyright © 2023 ACCU-SCOPE Inc. All rights reserved. Printed in the U.S.A.
ACCU-SCOPE Inc. reserves the right to change and improve specifications
without notice due to technological or manufacturing advances.

