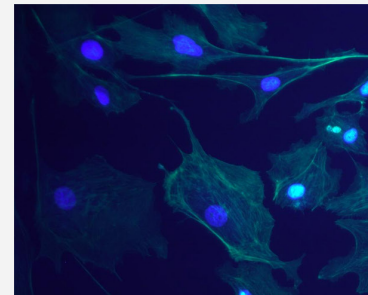
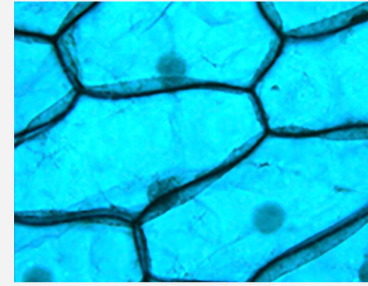
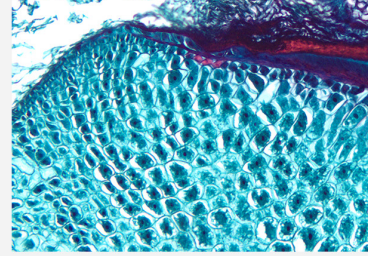


# INFINITY ANALYZE

## Imaging Software

The power to process and ANALYZE images captured with INFINITY cameras



Produce high quality images with INFINITY ANALYZE, a complete image capture and processing software package for advanced imaging in life science, clinical and industrial research markets. Easily capture and process images with excellent reproducibility and accuracy. The combination of INFINITY ANALYZE and INFINITY USB microscopy cameras create the perfect solution for all your imaging needs.

### Flexible Camera Control

- Produce high quality images using our advanced software features
- Optimize workflow by customizing the layout to your preference
- Save an unlimited number of unique user settings
- Easily manage and organize images with intuitive save features

### Basic Controls

Real time preview, manual/auto exposure, white balance, gain, file format storage options, brightness, gamma, saturation, intensity, hue, image orientation, averaging, subsampling, light source selection, flip vertical, flip horizontal, flip diagonal, zoom preview, cascade, tile horizontal, tile vertical, INFINITY3-1 cooling control, photometry data, channel splitting, image summing.

### Capture Options

Single capture, time lapse, auto increment filename and keyboard shortcut capture.

## Customized Image Processing and Archiving

- Quickly process, archive and save images in a variety of formats
- Apply and reproduce customized measurements and annotations with ease
- Effortlessly manage and retrieve images within the built-in database

## Highlights Include:

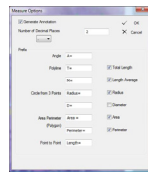
### Configure Layout to Suit

- Show/hide toolbars
- Show/hide auxiliary windows and camera controls
- Full screen mode
- Display/suppress captured images



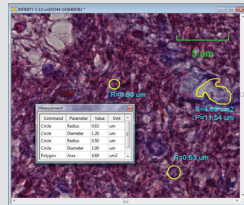
### Configure for Accurate Measurements

- Calibrate for each objective
- Store and manage calibration presets



### Measurements & Annotation

- Linear and area measurements
- Place micrometer bars
- Project tags for automated labelling
- Control colors, line weights, fonts
- Export data or drag/drop to Excel



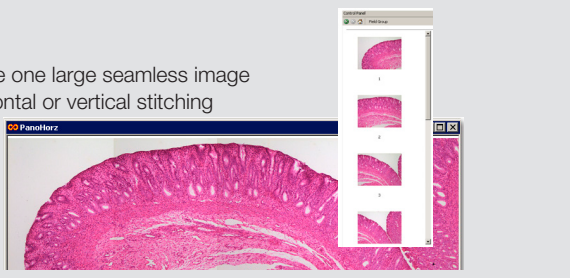
### Image Storage

- Multiple file formats
- Auto saving options
- Store to database
- Copy to Field Group

No.	Caption	Date	Author	Description
1	Adipose connective tissue 2-2C 1280x1024	2006-05-25 10:26:59	Mark	Slide Two
2	Blood smear 2-2C 1280x1024	2006-05-25 10:27:57	Jenn	Slide Three
3	Penicillium 2-2C	2006-05-25 10:34:59	John	Slide Four

### Stitching

- Create one large seamless image
- Horizontal or vertical stitching



### Video Tutorials

A series of video tutorials for INFINITY ANALYZE software is available on our website at: [lumenera.com/support/microscopy/training.php](http://lumenera.com/support/microscopy/training.php).

### Operating Systems

INFINITY ANALYZE is compatible with Windows as well as Mac OS x 10.7 (with limited features).



© 2015 Lumenera Corporation, all rights reserved.  
Design, features, and specifications are subject to change without notice.

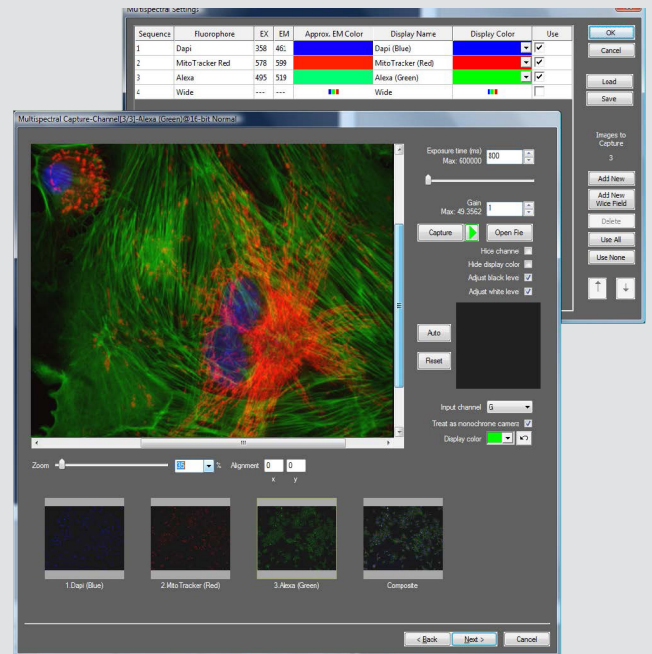
[www.lumenera.com](http://www.lumenera.com)  
VERSION 15-SCI-01

## Fluorescence/Multispectral Wizard

Lumenera has worked extensively to develop a user-friendly Multispectral Fluorescence Image Capture and composition solution that enables users to perform rapid and accurate image capture and merging of multiple images with flexible pseudo-color assignment per channel.

### Features Include:

- Identify filter cube/color tints
- Configure capture sequence
- Preserves setting info
- Manual adjust gain/exposure
- Multiple control methods available
- Composite results and individual channels stored
- Channel black level/stretch setting
- 16-bit format TIF
- 8-bit format TIF, JPG, BMP



### More INFINITY ANALYZE Features:

- Histogram display
- Time lapse capture
- Threshold-based cell counting
- Post-processing math functions
- Full user manual (Adobe PDF)
- Online video tutorials
- Additional product license for post-processing without camera (LuAP-1)
- Advanced features module (LuAP-2) for Multi-focus composition