



SKYE View™ 3 Mobile App

User Manual

V1.3

For use with SKYE WiFi cameras

ACCU-SCOPE Inc.

<https://accu-scope.com>

Contents

1. HARDWARE REQUIREMENTS	- 1 -
2. OPERATING SYSTEM REQUIREMENTS	- 1 -
3. APP DOWNLOAD AND INSTALLATION.....	- 1 -
4. CONNECT CAMERA TO POWER	- 2 -
5. CONNECTING SMART DEVICE TO CAMERA.....	- 2 -
<i>App Settings</i>	- 2 -
6. APP FUNCTION INTRODUCTION	- 3 -
7. LIVE PREVIEW WINDOW BUTTON INTRODUCTION	- 4 -
<i>7.1 Annotation Tools</i>	- 4 -
8. USE THE APP FOR CALIBRATION AND MEASUREMENT.....	- 5 -
9. IMAGE PROCESSING TOOLS	- 7 -
10. CAMERA CONTROL TOOLS	- 7 -
11. FOLDER MANAGEMENT	- 9 -
<i>11.1 Images management</i>	- 9 -
<i>11.2 Video management</i>	- 10 -

1. Hardware requirements

Please confirm that the smart device (mobile phones/ tablets) hardware supports the 5G WiFi IEEE 802.11ac protocol, otherwise it will not be able to connect to the camera and acquire an image correctly.

2. Operating system requirements

iOS system:

- iOS 11.0 or higher
- Dual-Core processor, 1.8GHz or higher
- 32GB hard disk space or more
- 2GB RAM
- USB 2.0 high-speed port
- Supports wireless protocol 5GHz WiFi IEEE802.11ac

Android system:

- Android v7.0 or higher
- Dual-Core processor, 1.7GHz or higher
- 32GB hard disk space or more
- 2GB RAM
- USB 2.0 high-speed port
- Supports wireless protocol 5GHz WiFi IEEE802.11ac

3. APP download and installation.

Use the camera of your smartphone or tablet to scan the QR code on the top of the camera or the appropriate QR code below (Android vs iOS), then download and install the SKYE View 3 APP as prompted.



Android app



Apple app

After the APP download is complete, follow the prompts to allow installation and allow all authorizations. Clicking "Not Allowed" will result in an inability to connect properly.

For Android users, you may also log into Google Play, search for "SKYE View3 " and download from there.


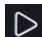
For iOS users, you may also log into the Apple App Store, search for "SKYE View 3" and download from there.

4. Connect camera to power

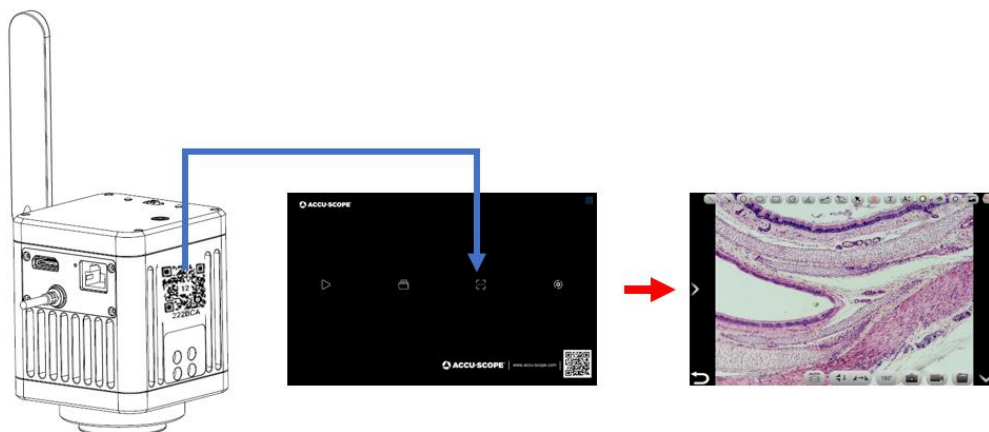
- 1) Connect the USB-A end of the USB cable to the USB port of the USB power adapter. Plug the USB power adapter into a 110V power outlet.
- 2) Turn the work mode switch of the WiFi Digital Camera to WiFi work mode. After about 20
- 3) seconds, the WiFi indicator in the WiFi camera stops flashing and stays on.

NOTE: The camera will not operate if connected directly to mobile device via USB cable.

5. Connecting Smart Device to Camera

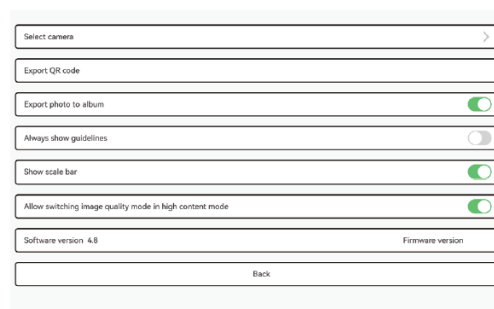
- 4) Launch the app on the smart device.
- 5) Click the Scan icon  and point the smart device's camera to the SKYE WiFi 3 QR code located on the side of the camera body.
- 6) If the app does not immediately go to Live Preview, click the "Play" icon  in the home app interface to enter Live Preview mode.

Scan "camera QR code" within the APP

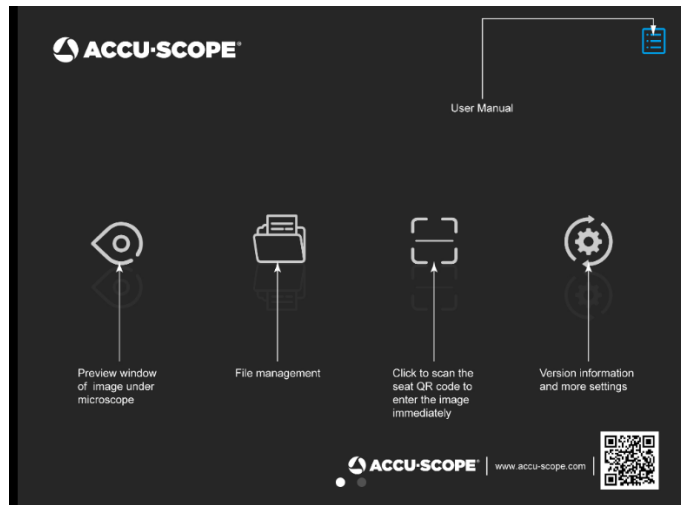


App Settings

Select camera	When there are two or more cameras in the LAN, you can select the cameras to be connected through the list.
Export QR code	Electronic digital QR code exportable.
Export photo to album	The photos taken by the APP will be automatically backed up to your phone album after you check the box.
Always show guidelines	The operation guide will show every time you launch the APP after you check the box.
Show scale bar	Check the box to show the scale in the preview window, uncheck it to hide the scale.
Allow switching image quality mode in high content mode	When checked, two image quality mode functions, speed priority and quality priority, will appear each time the high content mode is opened to switch.



6. APP function introduction



Live Preview

- Click here to enter the image preview window.



File folder

- View photo/video files.



Scan

- Scan the camera's serial number QR code to acquire the image.
- Although 13 or more smart devices can be connected simultaneously to one camera, to ensure preview speed it is recommended that no more than 10 mobile devices connect to the same camera at the same time.



Settings

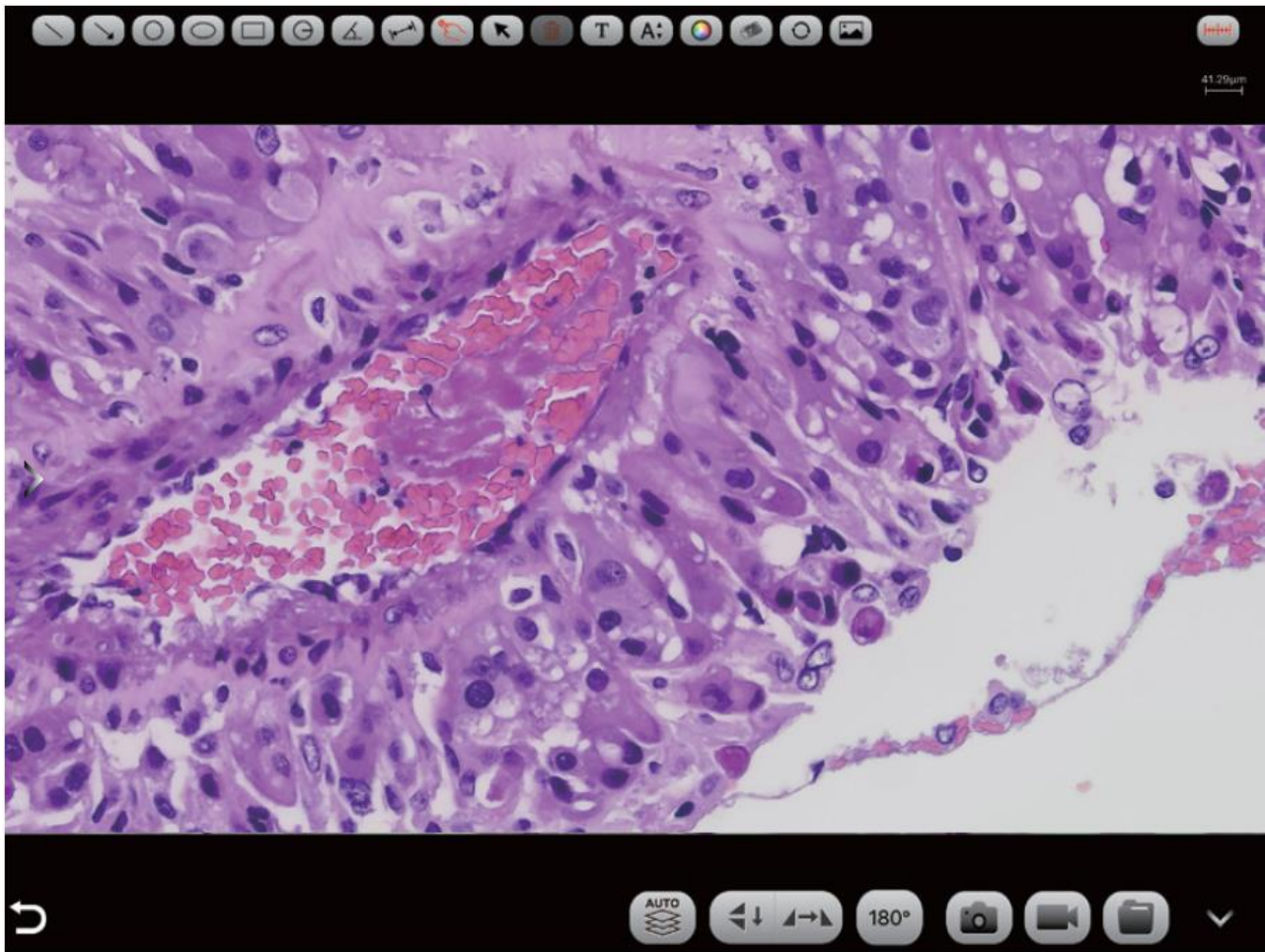
- APP settings.



User instructions
(top right corner)

- Retrieve/hide user instructions.

7. Live Preview window button introduction



Take picture



Record



Folder



This button toggles the preview mode to fast speed or high image quality. By default, images are captured at only the highest resolution possible.

7.1 Annotation Tools



Select



Move



Add text



Add a picture



Hand-draw



Eraser



Rotate



Delete



Line



Single-arrow



Round



Oval



Rectangular



Rounded radius



Protractor



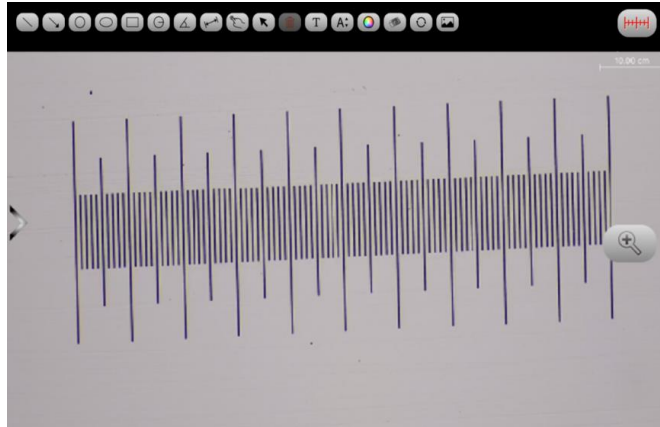
Linear measurement



Calibration

8. Use the APP for calibration and measurement

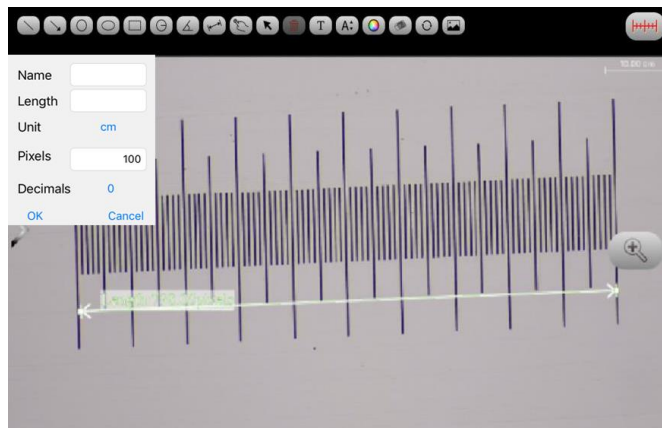
Place the calibration scale within the microscope's field of view.



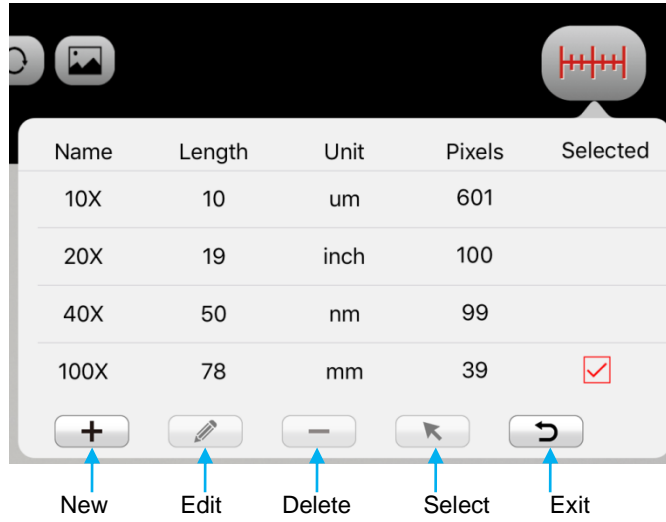
Click  - and "add"

Name	<input type="text"/>
Length	<input type="text"/>
Unit	cm
Pixels	<input type="text" value="100"/>
Decimals	<input type="text" value="0"/>
	OK Cancel

Enter the name, the actual length of the line drawn on the calibration scale, and select the unit. When you draw on the ruler, the pixels are automatically entered as shown below. Click "OK" to complete the calibration.



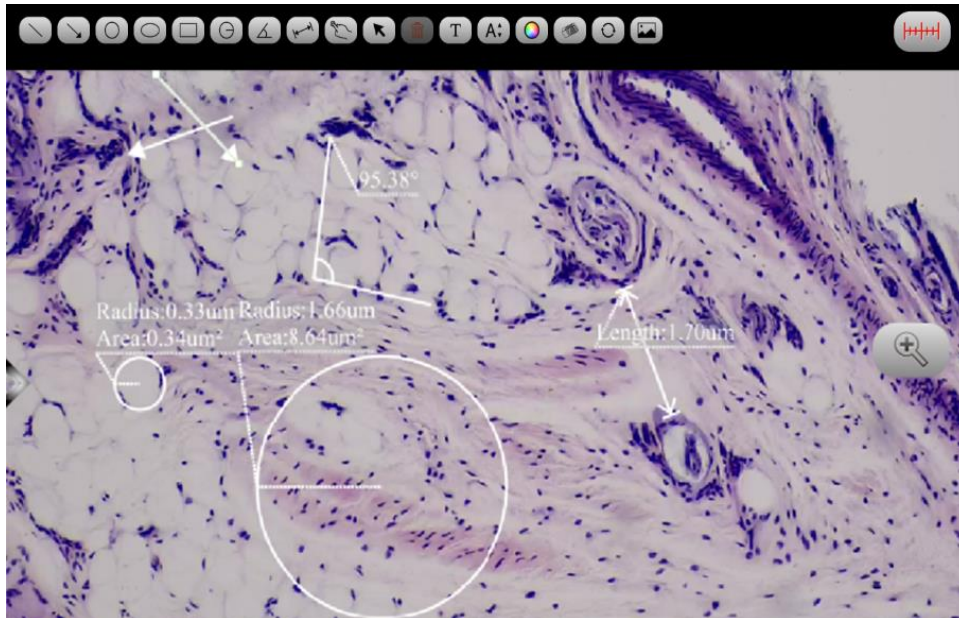
Select calibration value



Name	Length	Unit	Pixels	Selected
10X	10	um	601	
20X	19	inch	100	
40X	50	nm	99	
100X	78	mm	39	<input checked="" type="checkbox"/>

New Edit Delete Select Exit

Then use the measurement tool at the top of the preview window to measure



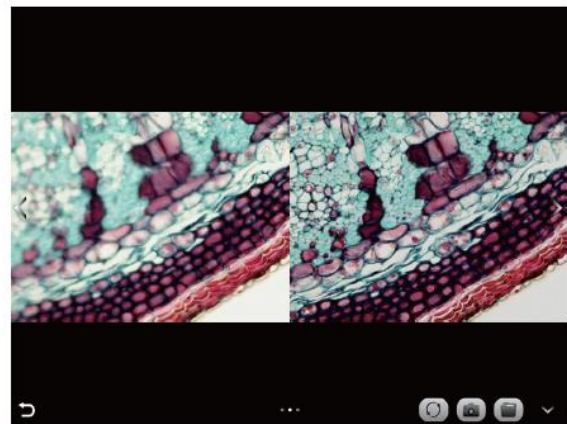
9. Image Processing Tools

	High-content mode		Flip / Mirror		180° Rotation
	Snapshot		Record		File management

Automatic depth-of-field fusion function for high content images

Automatic depth-of-field fusion function for high content images works with USB or WiFi connection.

Break through the limitation of insufficient depth-of-field in high magnification objective lenses, and to adjust the focal length can obtain a greater depth of field, thus obtaining a sharper image than a real-time single-frame image. Click "Snapshot" can save two images before and after depth of field fusion.



Operation steps:

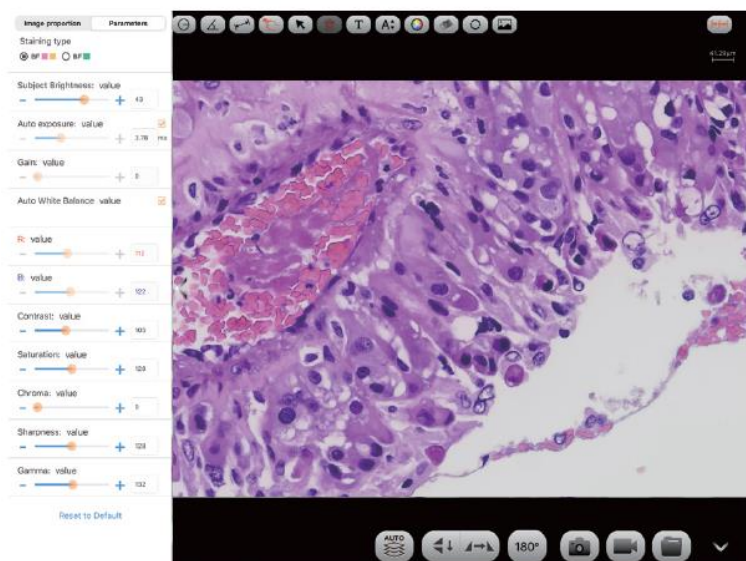
Step 1. Click "AUTO" button, a dual screen appears, the left screen is in line with the focal plane under the eyepiece, and the right screen is the result of high content fusion.

Step 2. Adjust the microscope coarse/fine focus knob, the depth-of-field fusion in real time on the right screen. If you switch the field of view midway, you can click "Refresh" button to refresh.

Step 3. Click "Snapshot" button to automatically save two pictures on the left and right screen, close the current window to exit, click "File management" button to enter the file manager and export pictures.

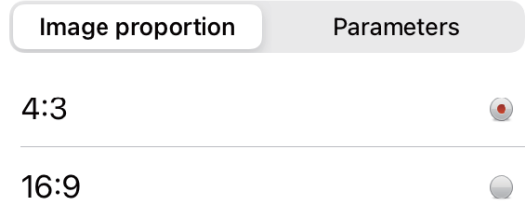
10. Camera Control Tools

Click the arrow button on the left side of the preview window to bring up the camera control bar.



1) Image ratio

Support switching 4:3 / 16:9 image ratio.



2) Camera staining type

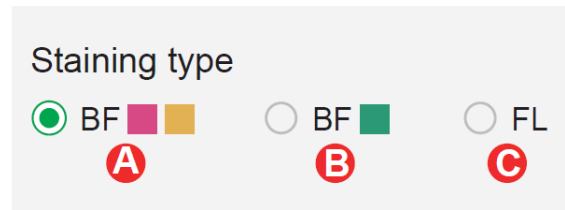
Users can select different exclusive types of stained pathology sections to obtain matching image effects and more accurate color reproduction.

Type A: for bright-field, red or gold-based sections;

Type B: for bright-field, cyan-dominated sections;

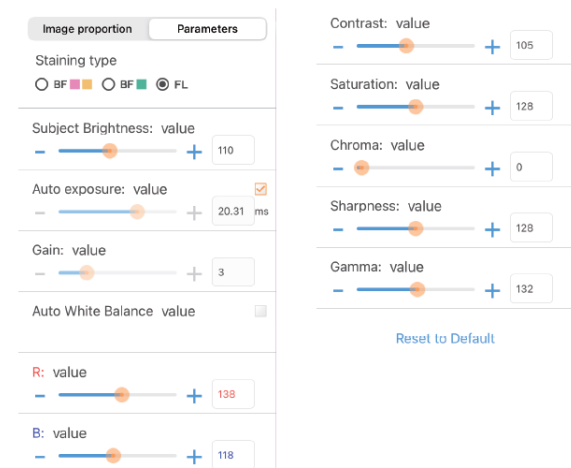
Type C: for fluorescence observation.

Note: Type C will only be displayed if the camera's firmware type supports type FL.



3) Camera properties adjustment

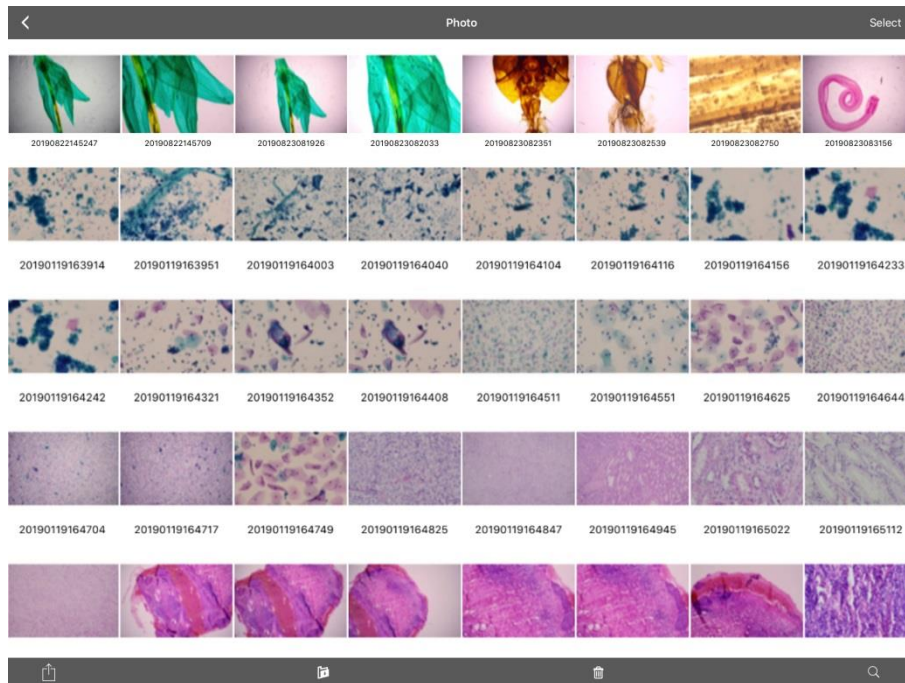
Support adjusting Target brightness, Auto / manual exposure, Gain, Auto / manual white balance (RB channel is adjusted separately), Contrast, Saturation, Hue, Sharpness, Gamma, Restore to Default.



11. Folder management



11.1 Images management



Click on "Select" in the upper right corner to make single or multiple selections and then click on the bottom four buttons:

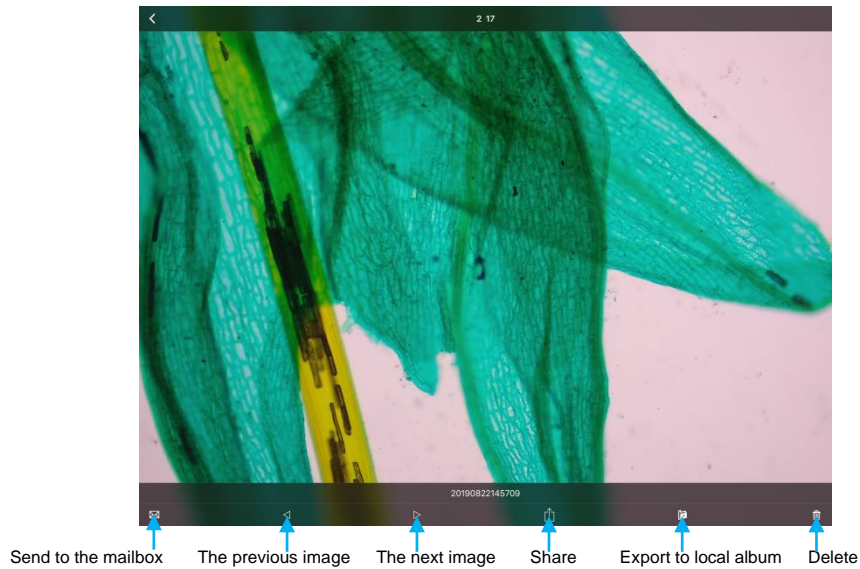
- One-click export to local album

Note: Please select Allow APP to access your album by setting your mobile device "Privacy - Photo", otherwise it will prompt "Export fail".

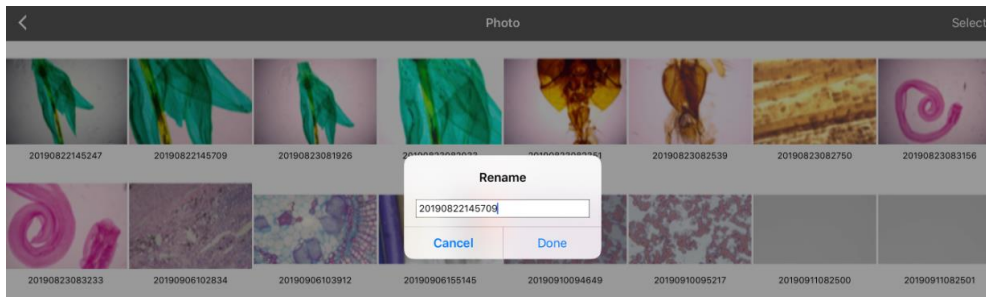
- Share to social networks
- One-click delete
- Search image file by name

Click to enter any image, the bottom button from left to right:

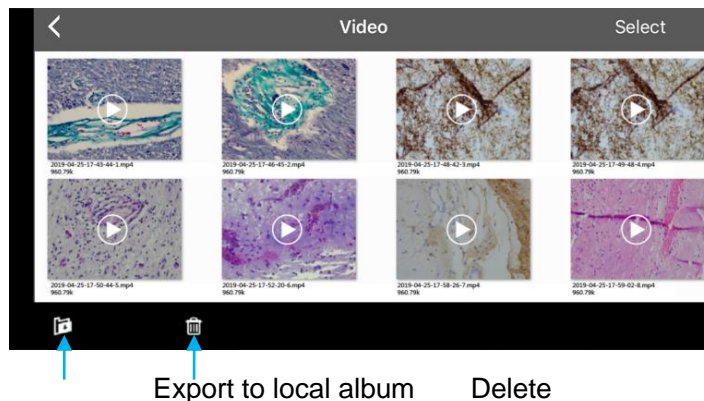
- send to the mailbox (the device needs to be installed in advance with the mailbox);
- the previous image;
- the next image;
- share a single image to a social network;
- export the image to a local Album;
- delete the picture



Click on the file name to rename.



11.2 Video management



Click "Select" in the top right corner and then click the button at the bottom.

- One-click export to local camera

Note: Please select Allow APP to access your album by setting your mobile device "Privacy-Photo", otherwise, it will prompt "Export fail".

- One-click delete