

# ACCU-CAM WiFi

WIFI/USB MICROSCOPY CAMERA

The ACCU-CAM WiFi Microscopy Camera delivers excellent color images and video directly to your mobile device via WiFi signals and the AccuView mobile app -- no need for a computer. Use the USB cable to connect to a Windows PC or Mac and control the camera via AccuView or AccuView LITE software. ACCU-CAM WiFi cameras provide exceptional convenience and value.

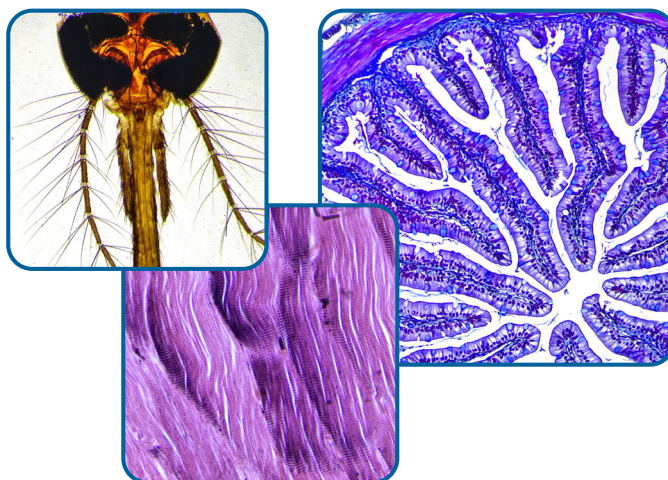


## Key Features



## Recommended Applications

- EDUCATION
- DEMONSTRATION
- TRAINING
- HOBBY



***Empowering Discovery. Advancing Results.***



# ACCU-CAM WiFi

WiFi/USB MICROSCOPY CAMERA

## Key AccuView Software Features

- Intuitive user interface
- Powerful image processing tools
- Calibrate, measure and annotate
- Image stitching (requires mechanical stage)
- Extended Depth of Focus
- Android, iOS, Windows and MacOS\* versions (try AccuView LITE for streamlined performance)

\*AccuView LITE only

CAMERA SPECIFICATIONS	
<b>Model</b>	AU-AC-WIFI
<b>Sensor</b>	SONY IMX307 Color CMOS
<b>Sensor Size</b>	1/2.8", 5.57mm (H) x3.13mm (V), Diagonal 6.46mm; 0.35x camera adapter recommended
<b>Resolution</b>	1920 x 1080
<b>Pixel Size</b>	2.9µm x 2.9µm
<b>Frame Rate</b>	50fps maximum via WiFi or USB
<b>Image/Video Capture</b>	Image format: JPG Video format: MJPEG (H.264 codec)
<b>Data Transmission</b>	Automatic switching between WiFi mode and USB mode
<b>Exposure Mode</b>	Automatic or manual
<b>White Balance</b>	Automatic, whole area, manual color temperature adjust
<b>ADC</b>	12-bit
<b>Power</b>	WiFi mode: USB DC 5V/1A adapter USB mode: power through USB from PC

- 2.1 MP CMOS camera
- 2.4GHz WiFi or USB 2.0
- Up to 50fps with up to 3 simultaneous WiFi connections (1 connection recommended)
- WiFi compatibility with Windows, iOS and Android (USB connection for Windows or MacOS\* only)
- AccuView imaging software and apps

\*requires AccuView LITE



ACCU-CAM WIFI shown on CAT# EXC-103 microscope



Uses a standard C-mount (0.35x recommended)

CONNECTIVITY SPECIFICATIONS	
<b>Wireless Standards</b>	2.4GHz, IEEE802.11b/g/n
<b>PC &amp; Mac Imaging Software</b> <i>(see additional features at right)</i>	<b>AccuView Imaging Software for Windows and MacOS Advanced Camera Controls:</b> live/still image measurement and annotation; flat field correction; extended depth of focus (focus stacking); image stitching (requires mechanical stage) <b>Image Types:</b> TIF, JPG, PNG TWAIN and DirectShow plugins available
<b>System Software Compatibility</b>	Windows 7, 8, 10, 11 (64-bit recommended) Mac OSX 10.4 and higher <b>Minimum System Recommendations:</b> Intel i5 or better (Quad Core or better); 4GB RAM or more; USB 2.0 high-speed port minimum
<b>iOS Compatibility</b>	iOS 11.0 or higher Supports 2.4G WiFi (11b/g/n) protocol
<b>Android Compatibility</b>	Android 5.0 or higher Dual-core processor 1.7GHz or higher RAM memory: 3GB or more Storage RAM: 8GB or more Supports 2.4G WiFi (11b/g/n) protocol



Copyright © 2023 ACCU-SCOPE Inc. All rights reserved. Printed in the U.S.A. ACCU-SCOPE Inc. reserves the right to change and improve specifications without notice due to technological or manufacturing advances.



v072423