



ACCU-SCOPE®

MICROSCOPY & IMAGING SOLUTIONS

ACCU-fluor LED

Fluorescence Illuminator

1, 2 or 3-channel fluorescence illumination accessory for upright microscopes. Includes built-in LED light source and filter sets. Compatible with most brands!



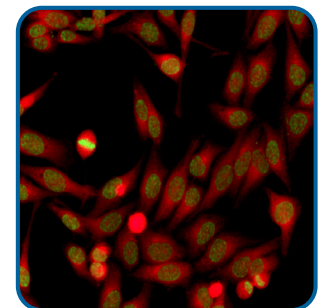
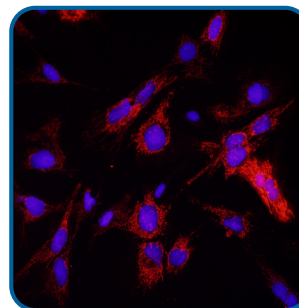
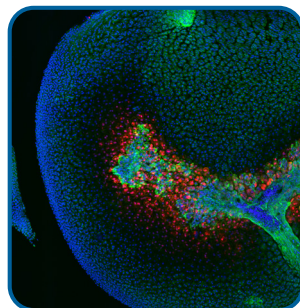
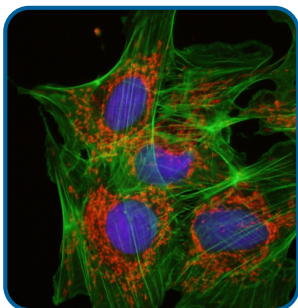
Key Features

- Built-in LED (Mercury FREE!)
- Turn-key, easy-to-use solution
- Up to 3 fluorescence channels
- Remembers channel intensity
- Easy to install
- Fits most upright microscopes*

**Adapters available to fit most manufacturers' microscopes including Leica, Nikon, Olympus and Zeiss*

Recommended Applications

- Immunostaining
- Protein Tracking
- Nucleic acids
- FISH
- Bacteria
- Membranes
- TB screening
- Intracellular signaling












Empowering Discovery. Advancing Results.

ACCU-fluor LED Fluorescence Illuminator

for Upright Microscopes

Fluorescence Channel Combinations

EXCITATION COLOR	COLORS BY WAVELENGTH	FILTER SETS BY CHANNEL
Blue (B)		Channel 1: EX: 475/40nm, BS: >500nm, EM: 535/45nm
Blue (long pass; B-LP)		Channel 1: EX: 475/40nm, BS: >500nm, EM: 510nmLP
Green (G)		Channel 1: EX: 525/45nm, BS: >560nm, EM: 595/60nm
Yellow (Y)		Channel 1: EX: 560/40nm, BS: >600nm, EM: 610nmLP
Blue + Green (BG)		Channel 1: EX: 475/40nm, BS: >500nm, EM: 535/45nm Channel 2: EX: 525/45nm, BS: >560nm, EM: 595/60nm
Blue + Yellow (BY)		Channel 1: EX: 475/40nm, BS: >500nm, EM: 535/45nm Channel 2: EX: 560/40nm, BS: >600nm, EM: 610nmLP
Blue + UV (long pass) (BU-LP)		Channel 1: EX: 475/40nm, BS: >500nm, EM: 535/45nm Channel 2: EX: 330-380nm, BS: >400nm, EM: 420nmLP
Blue + Green + UV (BGU)		Channel 1: EX: 475/40nm, BS: >500nm, EM: 535/45nm Channel 2: EX: 525/45nm, BS: >560nm, EM: 595/60nm Channel 3: EX: 330-380nm, BS: >400nm, EM: 420nmLP
Blue + Yellow + UV (BYU)		Channel 1: EX: 475/40nm, BS: >500nm, EM: 535/45nm Channel 2: EX: 560/40nm, BS: >600nm, EM: 610nmLP Channel 3: EX: 330-380nm, BS: >400nm, EM: 420nmLP

Applications Guide

CHANNEL CODE	FLUOROPHORES/STAINS/PROBES	APPLICATION
UV	DAPI / Hoechst 33258 Alexa Fluor 350 Calcofluor white	Nucleic acids Antibody labeling; Immunostaining Fungal infection
B	FITC / Alexa Fluor 488 / Cy2 / Fluo-4 / Fluoro-Jade	Antibody labeling; Immunostaining; STDs
	GFP / eGFP / wtGFP	Live cells: Protein expression; Protein tracking
	Fluo-4	Calcium indicator
	Fluoro-Jade	Neurons
B-LP (long-pass)	GFP / wtGFP	Live cells: Protein expression; Protein tracking
	Auramine O / Acridine orange	Bacteria; TB testing, Rabies, STDs
	DiO	Membranes
	YO-PRO-1	Apoptosis
	YOYO-1	Nucleic acids
G	TRITC / Cy3 / Alexa Fluor 546	Antibody labeling; Immunostaining
	dsRed / mRFP	Live cells: Protein expression; Protein tracking
	PI / EB / EH	Nucleic acids
Y	mCherry	Live cells: Protein expression; Protein tracking
	Texas Red / Alexa Fluor 594	Antibody labeling; Immunostaining



Copyright © 2022 ACCU-SCOPE Inc. All rights reserved. Printed in the U.S.A.
ACCU-SCOPE Inc. reserves the right to change and improve specifications
without notice due to technological or manufacturing advances.



v121422