



ACCU-SCOPE®

MICROSCOPY & IMAGING SOLUTIONS



Empowering Discovery. Advancing Results.

Coventional Microscopy. Uncoventional Solution.

FULL Optical Resolution

The RC500 supports the full range of high-resolution objectives from 4x to 100x. Change objectives with the press of a button through the software, the microscope LCD panel or hot buttons.

Menu Display Control

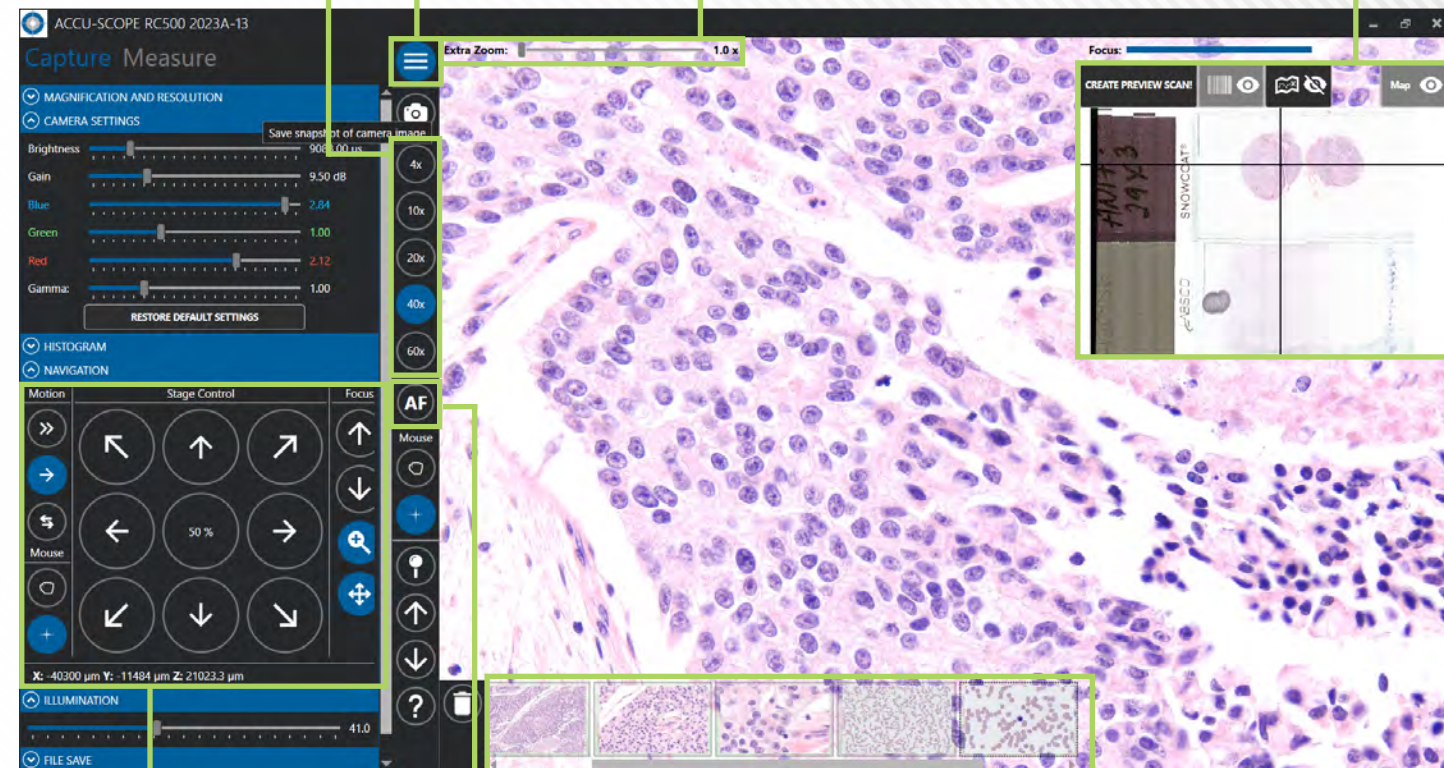
Click to collapse or show the left-side menu. Expand or collapse the blue menu function bars to change settings.

Fast Preview Scan

Load slide, click to create scan, share with peers. Generate heat map. Drop a pin to mark an ROI.

Digital Zoom

Need some extra zoom? Increase magnification without changing objectives.



FAST Continuous Autofocus

RC500 autofocus quickly adjusts to accommodate a wide variety of sample types. Switch to manual focus to reveal additional detail.

Selectable Sample Motion

Choose continuous stage motion or to move the sample by a percentage of the field (10%, 30%, 90%). Drag the image to move or click-to-center the viewable area. The options are yours.

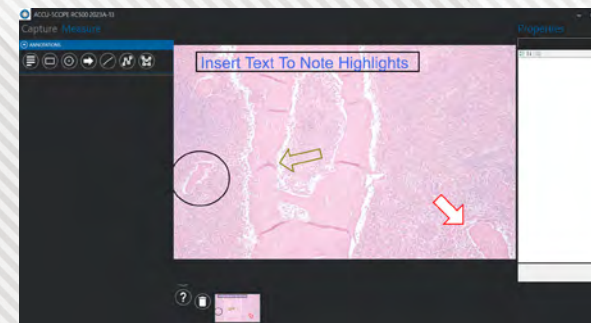
Gallery Thumbnail Images

Quickly review images captured to the gallery. Click to open for sharing, annotation or saving.



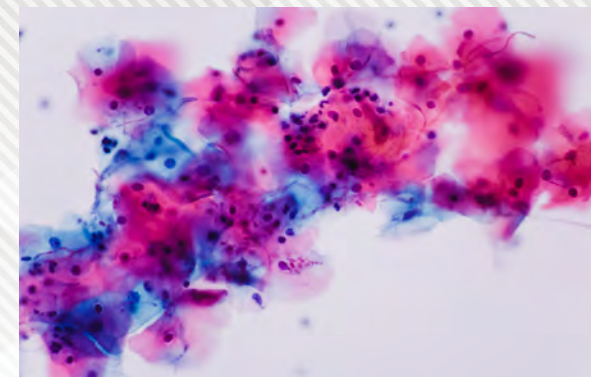
Seamless Remote Observation & Operation

The remote user interface provides for a complete experience whether inside or outside the institution. Move the stage, adjust focus, change objectives and illumination, and even annotate and measure!



Collaborate Anytime, Anywhere

Share and give access to images and microscope controls to a remote collaborator anywhere (requires internet access). Remote control software supports audio, chat and annotations between users.



FAST Continuous Autofocus

The RC500 automatically adjusts focus when the field of view changes. Change objectives or switch to manual focus at any time to reveal details that may otherwise be obstructed.



Elevated Conferences

Take conferences, instructional sessions and tumor boards to the next level. Share images from a remote location. Control the microscope freely to address the needs of the discussion.

RC500 Remote Collaboration System

| SPECIFICATIONS | |
|-----------------------------|---------------------------------------------------------------------------------------------------------------------------------------------------------------------------------------------------------------------------------------------------------------------------------------------------------------|
| Optical System | Infinity Optical System, f = 200mm |
| Viewing Heads | Fixed trinocular (50:50 split), 30° incline; rotatable 360°; interpupillary distance adjustment 47-78mm |
| Mult-viewing Options | Remote viewing included with RC500 software (requires internet connections) |
| Objectives | Plan semi-Apochromatic 4x, 10x, 20x, 40x*; Plan Achromat 60x* Optional: Plan Apochromatic 10x, 20x, 40x*, 60x* oil immersion, 100x* oil immersion; Plan Achromat 50x* oil immersion (*spring loaded) |
| Eyepieces | WF10x/22mm focusing eyepiece |
| Nosepiece | Motorized reversed sextuple nosepiece with analyzer slot; accepts M25 threaded objectives |
| Focusing System | Motorized focus, coarse/medium/fine (user selectable) |
| Stand | Cast aluminum alloy |
| Stages | Motorized stage with right-handed, drive-by-wire X-Y stage controls; dual slide holder |
| Condenser | Abbe condenser with iris diaphragm, N.A. 0.9 |
| Illumination | 3W LED Eco-illumination with variable intensity control, 25,000+ hour bulb life |
| Fluorescence | N/A |
| Observation Method | Brightfield |
| Power | Input: 100-240V 1.5A |
| Weight (approx.) | 36lbs. (standard configuration with fixed trinocular viewing head and motorized stage) |
| Cameras | 2.3 MP color camera, global shutter, 41fps (Conforms to CE, RoHS, GenICam, IP30, USB3 Vision, UL, ISO 13485:2016, FCC Class B, KC, EAC) |
| Software | ACCU-SCOPE RC500 Remote Collaboration Software: Transmit and view images from remote locations; change objectives, focus, light intensity and specimen position (requires motorized stage and remote access software (e.g., TeamViewer, Splashtop, etc.) installation; requires optional qualified Windows PC |



MICROSCOPY & IMAGING SOLUTIONS

WWW.ACCU-SCOPE.COM

73 Mall Drive, Commack, NY 11725
631-864-1000

| | | | | |
|--|--|---------------------------------------------------------------------------------|--|--|
| | | | | |
| | | READ THE CORRESPONDING MANUAL CAREFULLY TO ENSURE CORRECT USAGE OF ALL PRODUCTS | | |

Copyright © 2023 ACCU-SCOPE Inc. Printed in the U.S.A.
ACCU-SCOPE Inc. reserves the right to change and improve specifications without notice due to technological or manufacturing advances.