

Excelis 4K

UHD MICROSCOPY CAMERA

High performance 4K delivers full UHD images with exceptional color and resolution.

CaptaVision+ imaging software adds advanced acquisition, image processing, measurement, report generation, plus more!

The AU-800-4KS version includes a 13.3" 4K monitor that can be mounted directly to the camera allowing easy use of the camera's built-in software with heads-up viewing, and space-saving design.



Key Features



Recommended Applications

CLINICAL/CELL BIOLOGY

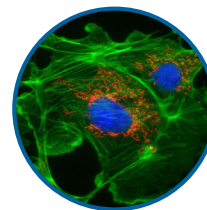
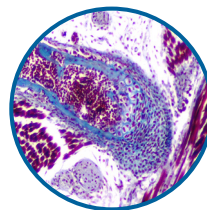
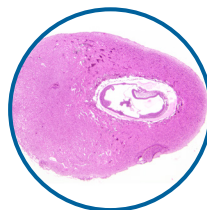
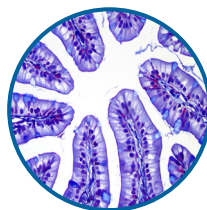
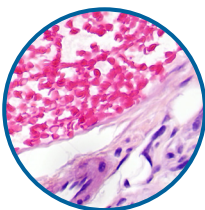
- Pathology
- Histology
- Microbiology
- Hematology

EDUCATION

- Dissection
- Instruction
- Demonstration
- Training

INDUSTRIAL

- Inspection
- Documentation
- Measurement



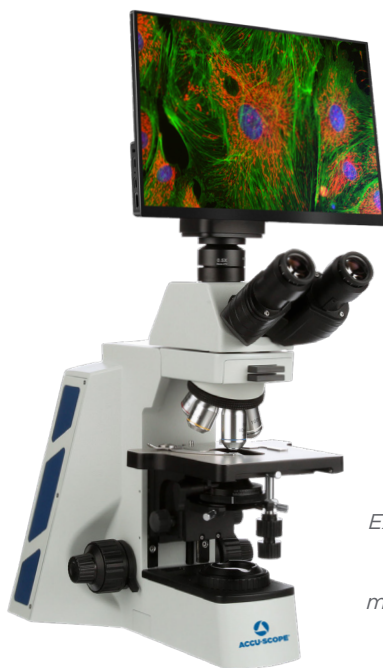
Empowering Discovery. Advancing Results.

Excelis 4K

UHD MICROSCOPY CAMERA

Key CaptaVision+ Software Features

- Intuitive & customizable user interface
- Simple calibration and measurements
- Advanced control of exposure, gain, color balance, etc.
- Powerful image processing tools
- Intelligent flat field correction
- Record video with voice
- JPG, TIFF, PNG, DICOM image types
- Flexible report generation and data export
- Voice recording with video



USB 3.0, HDMI & LAN ports allow for multiple connectivity

Excelis 4K camera & monitor (CAT# AU-800-4KS) shown on an EXC-400 microscope (sold separately)

| CAMERA & SOFTWARE SPECIFICATIONS | |
|----------------------------------|---|
| Model | AU-800-4K (camera only) AU-800-4KS (camera & monitor) |
| Sensor | Sony IMX585, CMOS, color |
| Sensor Size | 13.33mm (1/1.2") |
| Resolution | 8MP; 3840 (H) x 2160 (V) |
| Pixel Size | 2.9µm x 2.9µm |
| Frame Rate | HDMI: 30fps @ 3840x2160 USB 3.0: 30fps @ 3840 x 2160 GigE (Ethernet): 30fps @ 3840 x 2160 |
| Image Capture | 8MP / 4GB USB 3.0 memory stick (included) |
| Exposure Time | 0ms - 1sec |
| White Balance | Auto / manual |
| Settings | Gain, gamma, saturation |
| Data Interface | USB 2.0 (mouse), USB 3.0, HDMI, GigE (Ethernet) |
| PC and Mac Imaging Software | CaptaVision+ Imaging Software for PC and Mac OS Advanced Camera Controls: live/still image measurement and annotation; scale bar, flat field correction; extended depth of focus (focus stacking); image stitching; HDR (high dynamic range) function Image Types: JPG, PNG, TIF & DICOM TWAIN driver available |
| System Software Compatibility | Windows 7, 8, 10 & 11 (64-bit recommended) Mac OSX 10.4 and higher System Recommendations: intel i5 or better (Quad Core or better); 16GB RAM or more; USB 2.0 high-speed port minimum (USB 3.0 recommended) |
| Power/Weight | 2.4W / 505g |
| MONITOR SPECIFICATIONS | |
| Monitor (optional) | Mountable 13.3" 4K Display |
| Input Modes | AC power, HDMI |



Copyright © 2025 ACCU-SCOPE Inc. All rights reserved. Printed in the U.S.A. ACCU-SCOPE Inc. reserves the right to change and improve specifications without notice due to technological or manufacturing advances.



v031825